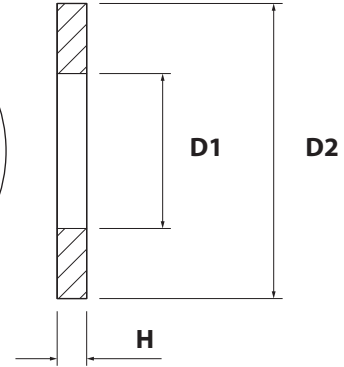
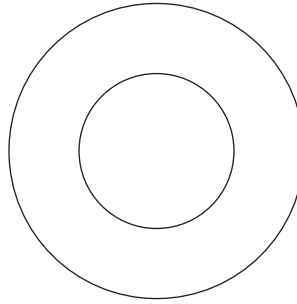


**ARANDELA PLANA DIN 125-A / ISO 7089 INOXIDABLE A-2**  
STAINLESS STEEL AISI 304 PLAIN STAMPED WASHER DIN 125-A

**FICHA TÉCNICA**  
TECHNICAL DATA SHEET

**Material / Material:**  
**Recubrimiento / Coating:**

Acero inoxidable A-2 / Stainless steel AISI 304  
Pulido / Polish



**MEDIDAS / MEASURES**

| M (mm) | D1   | D2    | H    |
|--------|------|-------|------|
| M1,6   | 1,7  | 4,0   | 0,3  |
| M2     | 2,2  | 5,0   | 0,3  |
| M2,5   | 2,7  | 6,5   | 0,5  |
| M3     | 3,2  | 7,0   | 0,5  |
| M3,5   | 3,7  | 8,0   | 0,5  |
| M4     | 4,3  | 9,0   | 0,8  |
| M5     | 5,3  | 10,0  | 1,0  |
| M6     | 6,4  | 12,0  | 1,6  |
| M7     | 7,4  | 14,0  | 1,6  |
| M8     | 8,4  | 16,0  | 1,6  |
| M10    | 10,5 | 20,0  | 2,0  |
| M12    | 13   | 24,0  | 2,5  |
| M14    | 15   | 28,0  | 2,5  |
| M16    | 17   | 30,0  | 3,0  |
| M18    | 19   | 34,0  | 3,0  |
| M20    | 21   | 37,0  | 3,0  |
| M22    | 23   | 39,0  | 3,0  |
| M24    | 25   | 44,0  | 4,0  |
| M27    | 28   | 50,0  | 4,0  |
| M30    | 31   | 56,0  | 4,0  |
| M33    | 34   | 60,0  | 5,0  |
| M36    | 37   | 66,0  | 5,0  |
| M39    | 40   | 72,0  | 6,0  |
| M42    | 43   | 78,0  | 7,0  |
| M45    | 46   | 85,0  | 7,0  |
| M48    | 50   | 92,0  | 8,0  |
| M52    | 54   | 98,0  | 8,0  |
| M56    | 58   | 105,0 | 9,0  |
| M60    | 62   | 110,0 | 9,0  |
| M64    | 66   | 115,0 | 9,0  |
| M72    | 74   | 125,0 | 10,0 |