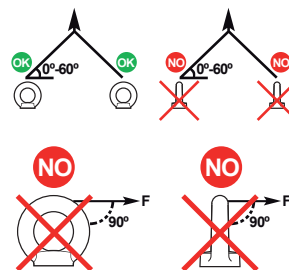
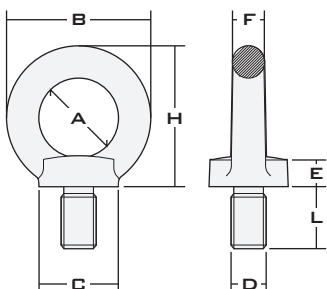


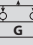






ANILLA DE ELEVACIÓN DIN 580 8.8
EYE BOLT DIN 580 8.8
FICHA TÉCNICA
 TECHNICAL DATA SHEET


CÓDIGO CODE	MÉTRICA METRICS	CMA. Ø°	A	B	C	E	F	H	PESO WEIGHT	
5808008	M 8x13	0,8	25	45	25	10	10	45	0,090	50
5808010	M10x17	1,0	25	45	25	10	10	45	0,110	50
5808012	M12x21	1,6	35	63	35	14	14	62	0,270	20
5808016	M16x27	4,0	35	63	35	14	14	62	0,310	20
5808020	M20x30	6,0	50	90	50	20	20	90	0,860	8
5808024	M24x36	8,0	50	90	50	20	20	90	0,900	8
5808030	M30x45	12,0	60	108	65	24	24	109	1,700	4

CARGA MÁXIMA DE TRABAJO / WORKING LOAD LIMIT

CÓDIGO CODE	MÉTRICA METRICS	1 RAMAL SINGLE LEG				2 RAMALES 2 LEGS			3/4 RAMALES 3/4 LEGS		PAR DE APRIETE MÁX. MAX. TIGHTENING COUPLE
		0° 	0° 	0° - 45° 	45° - 60° 	0° - 45° 	45° - 60° 	TN.	TN.	Nm.	
	(DxL) m.m.	TN.	TN.	TN.	TN.	TN.	TN.	TN.	TN.		
5808008	M 8x13	0,8	1,6	0,28	0,20	0,40	0,28			8	
5808010	M10x17	1,0	2,0	0,35	0,25	0,50	0,35			16	
5808012	M12x21	1,6	3,2	0,56	0,40	0,80	0,56			28	
5808016	M16x27	4,0	8,0	1,40	1,00	2,00	1,40			70	
5808020	M20x30	6,0	12,0	2,10	1,50	3,00	2,10			135	
5808024	M24x36	8,0	16,0	2,80	2,00	4,00	2,80			230	
5808030	M30x45	12,0	24,0	4,20	3,00	6,00	4,20			465	

 ROSCAR A MANO / TO BE SCREWED BY HAND
 COEFICIENTE DE SEGURIDAD - 4:1 / SAFETY RATIO - 4:1