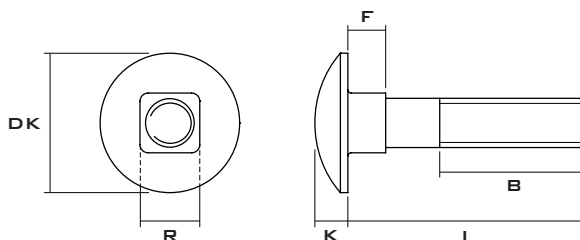
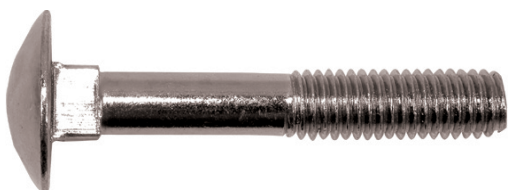


TORNILLO DIN 603 INOXIDABLE A-2
STAINLESS STEEL AISI 304 SCREW DIN 603

FICHA TÉCNICA
TECHNICAL DATA SHEET

Material / Material: Acero Inoxidable A-2 / Stainless Steel AISI 304
Recubrimiento / Coating: -



MEDIDAS DISPONIBLES / AVAILABLE MEASURES

Medidas en mm / Measures in mm

L	D	M5	M6	M8	M10	M12	M16
16		*	*	*			
20		*	*	*	*		
25		*	*	*	*		
30		*	*	*	*	*	
35		*	*	*	*	*	
40		*	*	*	*	*	*
45		*	*	*	*	*	*
50		*	*	*	*	*	*
60		*	*	*	*	*	*
70		*	*	*	*	*	*
80		*	*	*	*	*	*
90			*	*	*	*	*
100			*	*	*	*	*
110			*	*	*	*	*
120			*	*	*	*	*
130			*	*	*	*	*
140			*	*	*	*	*
150				*	*	*	*
160				*	*	*	*
170				*	*	*	*
180				*	*	*	*
200				*	*	*	*

R (MIN):	4,52	5,52	7,42	9,42	11,30	15,30
F (MAX):	4,10	4,60	5,60	6,60	8,75	12,90
K (MAX):	3,3	3,88	4,88	5,38	6,95	8,95
DK (MAX):	13,55	16,55	20,65	24,65	30,65	38,80
B(L ≤ 125):	16	18	22	26	30	38
B(125 < L ≤ 200):	22	24	28	32	36	44