





ABRAZADERA DE NYLON "LUXRING"

 PIPES NYLON WALL PLUG
 TAQUET POUR TUBES EN NYLON
 NYLONDÜBEL FÜR ROHRE



CAJA
SIMPLE / SIMPLE / SIMPLE

CÓDIGO CODE CODE	Ø TUBO PIPE Ø Ø TUBE	Ø-L BROCA DRILL Ø-L Ø-L FORET			PRECIO TARIFA PRICE LIST PRIX TARIFS
					
	m.m.	m.m.			€/100 u.
LUXRING14	14	Ø8 - 30	100	1.600	23,22
LUXRING16	16	Ø8 - 30	100	1.600	24,04
LUXRING18	18	Ø8 - 30	100	1.600	24,82
LUXRING20	20	Ø8 - 30	100	1.600	26,17
LUXRING22	22	Ø8 - 30	100	1.600	26,85
LUXRING25	25	Ø8 - 30	100	1.200	27,66
LUXRING28	28	Ø8 - 30	100	1.200	33,22
LUXRING32	32	Ø8 - 30	50	800	40,88

CAJA
DOBLE / DOUBLE / DOUBLE

CÓDIGO CODE CODE	Ø TUBO PIPE Ø Ø TUBE	Ø-L BROCA DRILL Ø-L Ø-L FORET			PRECIO TARIFA PRICE LIST PRIX TARIFS
					
	m.m.	m.m.			€/100 u.
LUXRINGD16	16	Ø8 - 30	100	1.200	28,33
LUXRINGD18	18	Ø8 - 30	100	1.200	32,16
LUXRINGD20	20	Ø8 - 30	100	1.200	32,97
LUXRINGD22	22	Ø8 - 30	100	900	34,82
LUXRINGD25	25	Ø8 - 30	100	900	38,29
LUXRINGD28	28	Ø8 - 30	50	600	49,50

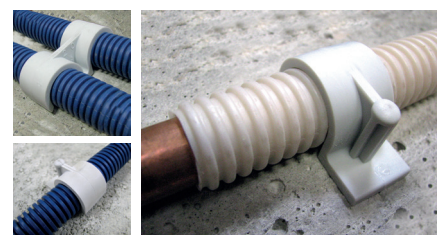
CAJA
CUÁDRUPLE / QUADRUPLE / QUADRUPLE

CÓDIGO CODE CODE	Ø TUBO PIPE Ø Ø TUBE	Ø-L BROCA DRILL Ø-L Ø-L FORET			PRECIO TARIFA PRICE LIST PRIX TARIFS
					
	m.m.	m.m.			€/100 u.
LUXRINGQ20	20	Ø8 - 30	50	600	55,94
LUXRINGQ25	25	Ø8 - 30	50	450	68,75

INSTALACIÓN

Perforar / Drill

Golpear / Hit

Listo / Ready

CARACTERÍSTICAS Y VENTAJAS

- Para la fijación de tubos y conductos
- Todos los materiales
- No daña el tubo
- Zona de ataque reforzada
- Promedio indicativo de la carga de rotura: 40kg en extracción
- 100% Nylon / Poliamida 6 / Estabilizado UV / Ignífugo