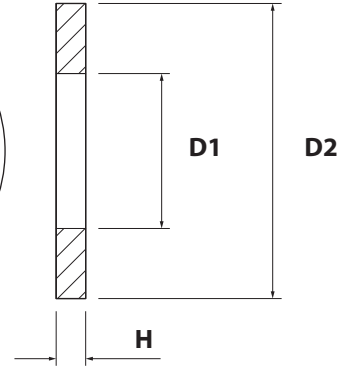
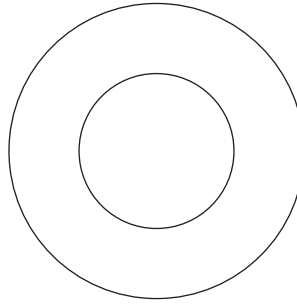


**ARANDELA PLANA DIN 125-A / ISO 7089 CINCADA**  
 ZINC PLATED PLAIN STAMPED WASHER DIN 125-A

**FICHA TÉCNICA**  
 TECHNICAL DATA SHEET

**Material / Material:**  
**Recubrimiento / Coating:**

Acero / Steel  
 Cincado plata Cr3 5µm / Cr3 5µm Zinc plated



**MEDIDAS / MEASURES**

M (mm)	D1	D2	H
M1,6	1,7	4,0	0,3
M2	2,2	5,0	0,3
M2,5	2,7	6,5	0,5
M3	3,2	7,0	0,5
M3,5	3,7	8,0	0,5
M4	4,3	9,0	0,8
M5	5,3	10,0	1,0
M6	6,4	12,0	1,6
M7	7,4	14,0	1,6
M8	8,4	16,0	1,6
M10	10,5	20,0	2,0
M12	13	24,0	2,5
M14	15	28,0	2,5
M16	17	30,0	3,0
M18	19	34,0	3,0
M20	21	37,0	3,0
M22	23	39,0	3,0
M24	25	44,0	4,0
M27	28	50,0	4,0
M30	31	56,0	4,0
M33	34	60,0	5,0
M36	37	66,0	5,0
M39	40	72,0	6,0
M42	43	78,0	7,0
M45	46	85,0	7,0
M48	50	92,0	8,0
M52	54	98,0	8,0
M56	58	105,0	9,0
M60	62	110,0	9,0
M64	66	115,0	9,0
M72	74	125,0	10,0