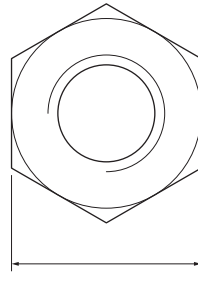


TUERCA DIN 985 / ISO 10511 INOXIDABLE A-2
STAINLESS STEEL AISI 304 HEXAGONAL LOCK NUT WITH NYLON INSERT

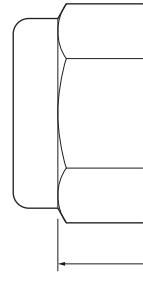
FICHA TÉCNICA
TECHNICAL DATA SHEET

Material / Material:

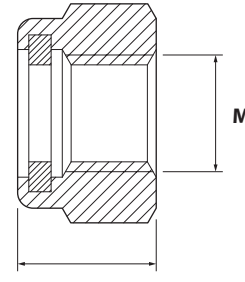
Acero inoxidable A2 / Stainless steel AISI 304



S



T



H

M

MEDIDAS / MEASURES

M (mm)	S	T min.	H max.	Paso / Pitch
M3	5,5	2,4	4,0	0,5
M4	7	2,9	5,0	0,7
M5	8	3,2	5,0	0,8
M6	10	4,0	6,0	1,0
M8	13	5,5	8,0	1,25
M10*	17/16*	6,5	10,0	1,5
M12*	19/18*	8,0	12,0	1,75
M14*	22/21*	9,5	14,0	2
M16	24	10,5	16,0	2
M18	27	13,0	18,5	2,5
M20	30	14,0	20,0	2,5
M22*	32/34*	15,0	22,0	2,5
M24	36	15,0	24,0	3
M27	41	17,0	27,0	3
M30	46	19,0	30,0	3,5
M33	50	22,0	33,0	3,5
M36	55	25,0	36,0	4
M39	60	27,0	39,0	4
42	65	29,0	42,0	4,5
45	70	32,0	45,0	4,5
48	75	36,0	48,0	5

* Medidas según norma ISO / Measurements according to ISO standard / Mesures selon la norme ISO / Messungen nach ISO-Norm
DIN/ISO