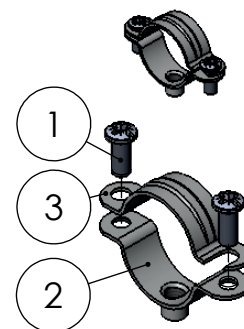
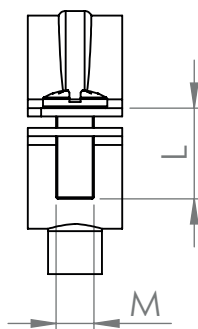
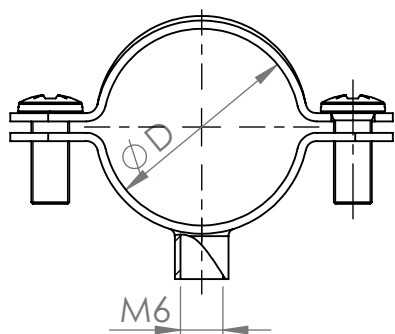
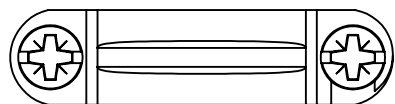


**ABRAZADERA DE TUBO SIMPLE M-6**  
 SIMPLE CLAMP M-6

**FICHA TÉCNICA**  
 TECHNICAL DATA SHEET



Nº	Pieza	Part	Material	Acabado
1	Tornillo	Screw	Acero	Bicromatado
2	Banda para M6	Band for M6	Acero	Bicromatado
3	Banda	Band	Acero	Bicromatado

Medida		Tornillo
"	$\phi D$ (mm)	MxL
	8	M5X12
1/8	10	M5X12
1/4	12	M5X12
	14	M5X12
	15	M5X12
3/8	16	M5X12
	18	M5X12
	20	M5X12
1/2	22	M5X12
	25	M5X12
3/4	26	M5X12
	28	M5X12
	32	M5X12
1"	35	M5X12
	37/38	M5X12
	40	M5X12
1 1/4	42	M5X12
1 1/2	47	M5X12
	50	M5X12
	54	M5X12
2"	60	M5X12
	63	M5X12

Diseño Técnico (Título): <b>Abrazadera de tubo Simple M-6</b>	
Tolerancias Dimensionales Generales DIN ISO 2768- m Tolerancias Geométricas Generales DIN ISO 2768- K Tolerancias ISO 8015	<b>A4</b>
Escala: 1:1	Hoja 1 de 1