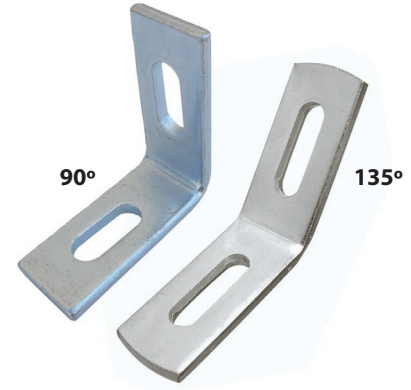


## ESCUADRAS PERFORADAS HOLE CORNER ANGLES

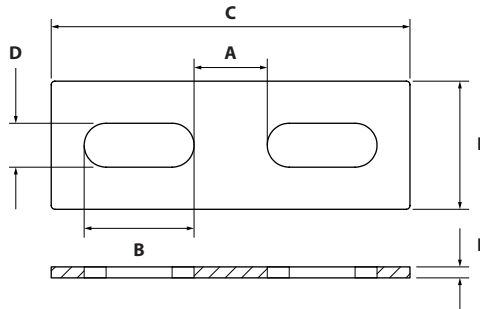
### FICHA TÉCNICA TECHNICAL DATA SHEET

Escuadra a 90° o 135°. Pieza de acero DC01ST12 cincado, conformada por estampación.  
Se le perforan dos colisos uno en cada extremo y equidistantes entre ellos.  
Posteriormente se dobla a 90° o 135°.  
Pensado para utilizarla con guías de 27-18, 28-30 y 38-40, 40-20, STRUT 41-21 y STRUT 41-41. Vale para formar ángulos con dos guías metálicas.

*Squad at 90° or 135°. Zinc plated DC01ST12 steel part, shaped by stamping. Two slots are drilled, one at each end and equidistant between them. Later it is bent to 90° or 135°. Designed to be used with 27-18, 28-30 and 38-40, 40-20, STRUT 41-21 and STRUT 41-41 guides. Valid to form angles with two metal guides.*



### DATOS TÉCNICOS / TECHNICAL DATA



CÓDIGO Code / Code	CÓDIGO Code / Code	CARRIL Channel / Gouttière	C	L	E	A	BxD
90° 90°	135° 135°		m.m.	m.m.	m.m.	m.m.	m.m.
EP090	-	<b>27x18 / 28x30</b>	85	24	5	15	16x10
-	EP135	<b>27x18 / 28x30 / 38x40</b>	110	24	3	30	27x11