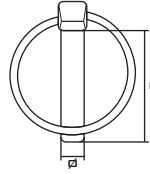


PASADOR ANILLA CINCADO

ZINC PLATED LINC PINS
GOUPILLE ANNEUX EN ACIER ZINGUÉ
KLAPPSTECKER VERZINKT



ZN

CAJA

| CÓDIGO CODE CODE | MEDIDA SIZE MESURE øxL (m.m.) | CINCO | CINCADO | |
|------------------------|--|-------|--|----------|
| | | | PRECIO TARIFA PRICE LIST PRIX TARIFS | €/100 U. |
| PAZ04532 | 4,5x32 | 100 | | 47,63 |
| PAZ06040 | 6x40 | 100 | | 59,55 |
| PAZ07040 | 7x40 | 100 | | 63,75 |
| PAZ08045 | 8x45 | 100 | | 67,00 |
| PAZ09045 | 9x45 | 100 | | 82,25 |
| PAZ10045 | 10x45 | 100 | | 95,25 |
| PAZ11045 | 11x45 | 50 | | 99,91 |

AUTOSERVICIO

| CÓDIGO CODE CODE | MEDIDA SIZE MESURE m.m. | CINCO | | CINCADO | |
|------------------------|--------------------------------------|--|--|---------|------|
| | | PRECIO TARIFA PRICE LIST PRIX TARIFS | PRECIO TARIFA PRICE LIST PRIX TARIFS | €/BOLSA | |
| BFPAZ4532 | 4,5x32 | 10 | 12 | | 7,91 |
| BFPAZ6040 | 6x40 | 8 | 12 | | 7,88 |
| BFPAZ7040 | 7x40 | 6 | 12 | | 6,47 |
| BFPAZ8045 | 8x45 | 6 | 12 | | 6,75 |

BLISTERS

| CÓDIGO CODE CODE | MEDIDA SIZE MESURE m.m. | CINCO | | CINCADO | |
|------------------------|--------------------------------------|--|--|-----------|------|
| | | PRECIO TARIFA PRICE LIST PRIX TARIFS | PRECIO TARIFA PRICE LIST PRIX TARIFS | €/BLISTER | |
| BPAZ045032 | 4,5x32 | 4 | 12 | | 3,89 |
| BPAZ060040 | 6x40 | 4 | 12 | | 3,89 |
| BPAZ070040 | 7x40 | 4 | 12 | | 3,89 |
| BPAZ080045 | 8x45 | 4 | 12 | | 3,89 |
| BPAZ090045 | 9x45 | 2 | 12 | | 3,89 |
| BPAZ100045 | 10x45 | 2 | 12 | | 3,89 |
| BPAZ110045 | 11x45 | 2 | 12 | | 3,89 |

**PEDIDO MÍNIMO 1 EMBALAJE / MINIMUM ORDER 1 PACKAGING
COMMANDE MINIMALE 1 EMBALLAGE / MINDESTBESTELLMENGE 1 VERPACKUNG**

MALETÍN PASADORES ANILLA CINCADOS

ZINC PLATED LINC PINS BRIEFCASE / MALLETTE DE GOUPILLE ANNEAUX EN ACIER ZINGUÉ / HANDKOFFER AUS KLAPPSTECKER VERZINKT



MEDIDAS INCLUIDAS EN EL MALETÍN
MEASURES INCLUDED IN THE BRIEFCASE / MESURES INCLUSES DANS LE MALLETTE

| MEDIDA SIZE / MESURE m.m. | CANTIDAD QUANTITY QUANTITÉ |
|---------------------------------|----------------------------------|
| ø 4,5x32 | 10 |
| ø 6x40 | 8 |
| ø 7x40 | 8 |
| ø 8x45 | 8 |
| ø 9x45 | 8 |
| ø 10x45 | 5 |
| ø 11x45 | 5 |

| CÓDIGO CODE / CODE | DESCRIPCIÓN DESCRIPTION / DESCRIPTION |
|-----------------------|--|
| MPAZ2 | MALETÍN DE PASADORES ANILLA CINCADOS |

| PRECIO TARIFA / PRICE LIST | PRECIO TARIFA / PRICE LIST |
|----------------------------|----------------------------|
| €/UNIDAD | €/100 U. |
| 51,57 | 5.157,00 |