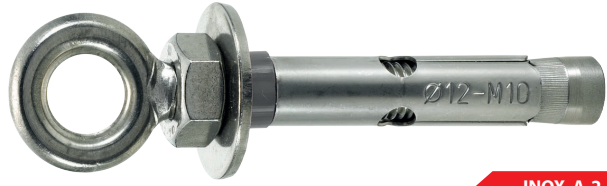


FIXBOLT ARO INOXIDABLE A-2

SLEEVE ANCHOR EYE - STAINLESS STEEL AISI 304
 CHEVILLE À DOUILLE AVEC PITON - ACIER INOX. A-2
 HÜLSENANKER MIT AUGENSCHRAUBE - EDELSTAHL A-2



CAJA / BOX / BOÎTE

INOX. A-2 / S.S. AISI 304

CÓDIGO <i>Code / Code</i>	MEDIDA <i>Measure / Mesure</i> MxL/Ø m.m.	Ø INT. <i>Ø Int. / Ø Int.</i> m.m.	LLAVE <i>Wrench / Clé</i> S	PA. Nm	*CMA. <i>Extracción</i> <i>tension load / extraction</i> kN	PROF. TALADRO <i>Hole depth / Prof. trou</i> m.m.		
FA208C	M6x45/Ø8	10,0	10	10	2,77	50	100	600
FA210C	M8x60/Ø10	11,0	13	25	5,00	65	50	300
FA211C	M8x60/Ø11	11,0	13	25	5,00	65	50	300
FA212C	M10x70/Ø12	14,0	17	35	6,00	75	25	150
FA214C	M10x70/Ø14	14,0	17	35	6,00	75	25	150
FA216C	M12x80/Ø16	16,0	19	50	8,00	85	20	120

AUTOSERVICIO / SELF-SERVICE / AUTO-SERVICE

INOX. A-2 / S.S. AISI 304

CÓDIGO <i>Code / Code</i>	MEDIDA <i>Measure / Mesure</i> MxL/Ø m.m.		
BFFA208C	M6x45/Ø8	4	12
BFFA210C	M8x60/Ø10	2	12
BFFA212C	M10x70/Ø12	2	12

BLISTER / BLISTER / BLISTER

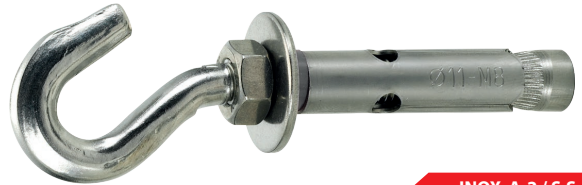
INOX. A-2 / S.S. AISI 304

CÓDIGO <i>Code / Code</i>	MEDIDA <i>Measure / Mesure</i> MxL/Ø m.m.		
BFA208C	M6x45/Ø8	2	15
BFA210C	M8x60/Ø10	2	15

PEDIDO MÍNIMO 1 EMBALAJE / MINIMUM ORDER 1 PACKAGING / COMMANDE MINIMALE 1 EMBALLAGE / MINDESTBESTELLMENGE 1 VERPACKUNG

FIXBOLT GANCHO INOXIDABLE A-2

SLEEVE ANCHOR HOOK - STAINLESS STEEL AISI 304
 CHEVILLE À DOUILLE AVEC CROCHET - ACIER INOX. A-2
 HÜLSENANKER HAKEN - EDELSTAHL A-2



CAJA / BOX / BOÎTE

INOX. A-2 / S.S. AISI 304

CÓDIGO <i>Code / Code</i>	MEDIDA <i>Measure / Mesure</i> MxL/Ø m.m.	LLAVE <i>Wrench / Clé</i> S	PA. Nm	*CMA. <i>Extracción</i> <i>tension load / extraction</i> kN	PROF. TALADRO <i>Hole depth / Prof. trou</i> m.m.		
FG208C	M6x45/Ø8	10	10	0,90	50	100	600
FG210C	M8x60/Ø10	13	25	1,60	65	50	300
FG211C	M8x60/Ø11	13	25	1,60	65	50	300
FG212C	M10x70/Ø12	17	35	2,90	75	25	150
FG214C	M10x70/Ø14	17	35	2,90	75	25	150
FG216C	M12x80/Ø16	19	50	4,00	85	20	120

AUTOSERVICIO / SELF-SERVICE / AUTO-SERVICE

INOX. A-2 / S.S. AISI 304

CÓDIGO <i>Code / Code</i>	MEDIDA <i>Measure / Mesure</i> MxL/Ø m.m.		
BFFG208C	M6x45/Ø8	4	12
BFFG210C	M8x60/Ø10	2	12
BFFG212C	M10x70/Ø12	2	12

BLISTER / BLISTER / BLISTER

INOX. A-2 / S.S. AISI 304

CÓDIGO <i>Code / Code</i>	MEDIDA <i>Measure / Mesure</i> MxL/Ø m.m.		
BFG208C	M6x45/Ø8	2	15
BFG210C	M8x60/Ø10	2	15

PEDIDO MÍNIMO 1 EMBALAJE / MINIMUM ORDER 1 PACKAGING / COMMANDE MINIMALE 1 EMBALLAGE / MINDESTBESTELLMENGE 1 VERPACKUNG